



# INCA 5420

## WISI Inca All Seeing Eye

**Affordably monitor  
all the channels in  
your network**



The Inca All Seeing Eye 5420 provides sophisticated visual monitoring and an overview mosaic of the IP Video streams in your headend. Inca All Seeing Eye probe functionality is included in every Inca product, and the Inca VidiOS™ Probe 5410 is available for monitoring streams generated by other vendors' equipment. Powered by Inca's VidiOS™ architecture, the Inca All Seeing Eye supports HD and SD MPEG-2 and MPEG-4 AVC streams. Team members can interactively oversee the network using any web browser to view mosaics of video thumbnails and easily see how each program is performing.

- MONITOR IP MULTICAST VIDEO
- THUMBNAIL MOSAIC
- LOCAL AND REMOTE MONITORING
- VIDIOS™ INTELLIGENCE
- CENTRALIZED MANAGEMENT



### Applications

- Easily monitor all channels with video thumbnail mosaics on readily-available flat-panel TVs or wall mounted displays in the call center and engineering areas; or monitor on-the-go with a laptop or tablet
- Enjoy powerful VidiOS™ troubleshooting tools with inbound and outbound video thumbnails, detailed stream statistics, including PID and payload details, warnings and errors
- Efficiently troubleshoot streams by tracing impairments through the network with easy click-through to remote system management interfaces
- Leverage the intelligent VidiOS™ probe capability included in every Inca video processing product to add stream monitoring to your network and affordably monitor other video streams using Inca's VidiOS™ Probe 5410
- Ensure prompt service response with remote visibility into stream details during late night service calls
- Expedite communication with content providers with clickof-a-button full frame and stream sample downloads

# INCA 5420

## WISI Inca All Seeing Eye



### Technical Information

#### VidiOST™ Intelligent Transport Stream Monitor

<b>Input</b>	IP from Remote Probe Management Network Interfaces
<b>Display Modes</b>	<ul style="list-style-type: none"> <li>- Web Based Interactive User Interface</li> <li>- Full Screen Passive Mosaic Wall Mounted Display</li> </ul>
<b>Stream Analysis</b>	<ul style="list-style-type: none"> <li>- MPEG-2 Transport Stream Structure and Display</li> <li>- Thumbnail Images</li> <li>- Transport, Program and Individual PID Bit Rates</li> <li>- Transport Stream Peak and Average Bit Rates</li> <li>- Multiplex, Program and Individual PID Error Detection</li> </ul>

#### Display

<b>Mosaic Features</b>	<ul style="list-style-type: none"> <li>- Mosaic of Remote Video Stream Thumbnail Images with Stream Statistics</li> <li>- Visual Remote Alarm Highlighting</li> <li>- Click Through to Single Frame Capture and Download</li> <li>- Click to Download 10 Second Stream Sample for Offline Analysis</li> <li>- Click Through from Thumbnail to Remote System Management Interface</li> </ul>
<b>Remote Alarm Rollup</b>	<ul style="list-style-type: none"> <li>- Remote Probe Transport Stream Alarms in one Place</li> <li>- Click Through from Alarm to Remote System Management Interface</li> <li>- Rapid Configuration via Automatic Detection of VidiOS Streams</li> <li>- Drag and Drop Mosaic Builder</li> <li>- Multiple Channel Groups</li> </ul>

#### Management

<b>User Interface</b>	<ul style="list-style-type: none"> <li>- Powerful VidiOST™ Web Based User Interface</li> <li>- Rapid Configuration via Automatic Detection of VidiOS Streams</li> <li>- Drag and Drop Mosaic Builder</li> <li>- Multiple Channel Groups</li> </ul>
-----------------------	--

#### Network Interfaces

<b>Management</b>	1000 Base-T
<b>Secondary Network</b>	7x 1000 Base-T

#### Power

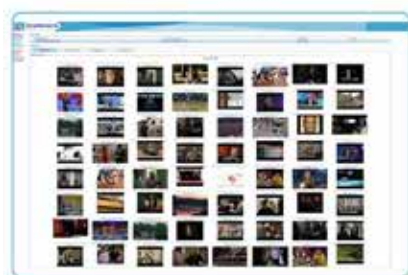
<b>Type</b>	Dual Redundant Hot Swap
<b>Input</b>	100 ~ 240 VAC @ 50 - 60 Hz
<b>Power</b>	<120 W Typical

#### Physical

<b>Mounting</b>	19", 4 Post Rack, 1 RU Slide rails included
<b>Dimensions</b>	431 x 44 x 468 mm 19" x 1.75" x 18.4"
<b>Weight</b>	7 kg / 15.4 lb
<b>Operating Temperature</b>	0 ~ 40 C

#### Regulatory Compliance

<b>EMC Standards</b>	FCC Part 15 Class A
----------------------	---------------------



Mosaic View



Stream Impairment



Click to Full Frame

WISI Communications GmbH & Co. KG  
P.O. Box 1220  
75219 Niefern-Oeschelbronn, Germany

Phone: +49 72 33-66-2 80  
Fax: +49 72 33-66-3 50  
E-mail: export@wisi.de

